



The WYSO Center

VENUE
RENTALS &
SPECIFICATIONS



Table of Contents

| | |
|----|-------------------------|
| 03 | Who Are We? |
| 04 | Our Mission & Values |
| 06 | Floor Plans |
| 09 | Dining and Patio Space |
| 11 | Room Configurations |
| 14 | Features and Amenities |
| 18 | Catering Partners |
| 19 | Hotels & Accommodations |
| 20 | Fee Schedule |
| 21 | Contact |

Who Are We?

The WYSO Center is a state-of-the-art community gathering and performance space available for rent for your next big rehearsal, recital, or corporate event. Home of the world-renowned Wisconsin Youth Symphony Orchestras, this brand-new multi-use facility is located on East Washington Avenue one mile east of Capitol Square in the heart of Madison's burgeoning downtown arts corridor.

Built with the latest eco-conscious design practices and staffed by a friendly team of WYSO Center event coordinators, this naturally lit and inviting new building is the perfect choice for any community or corporate event, no matter its size or budget.

Have a look around. We're ready to chat when you are.



Our Mission & Values

Every rental fuels the next generation. On stage and beyond.

Mission Statement

At the Wisconsin Youth Symphony Orchestras (WYSO), we believe in the power of music to transform lives. Through education and performance, we nurture young musicians to become confident, curious, and community-minded leaders.

The WYSO Center exists to support that mission. But it's more than a rehearsal space. It's a hub for values-driven gatherings of all kinds. Whether you're advancing the arts, equity, education, or wellness, your event helps power a deeper purpose.

Our Core Values

Access for All

From scholarships to community partnerships, we work to remove barriers so every child can experience the joy of music.

Excellence in Education

We invest in top-tier instructors, advanced repertoire, and performance opportunities that prepare students for life.

Community Impact

WYSO programs reach over 20,000 people annually. And not just in Madison, but across Wisconsin's cities, towns, and rural communities.

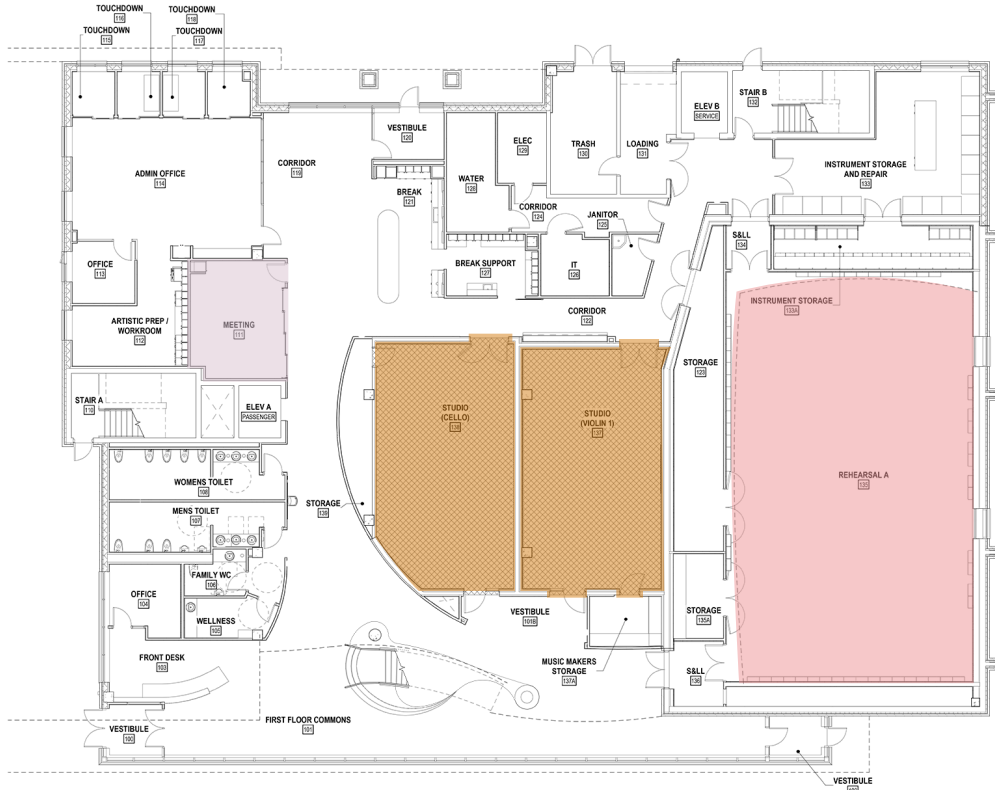
Creative Growth

Music builds character. So does collaboration, curiosity, and showing up for what you believe in. We welcome organizations who share those values.



Floor Plans

1st Floor



Rehearsal A

42'9" by 67'9", ~2900 sq. ft.

CAPACITY:

- Standing or seated, chairs only: 180
- Seated at tables: 120

BALCONY:

- Additional 60 chairs

Large Studios (Cello & Violin 1)

39'9" by 23', ~915 sq. ft.

CAPACITY:

- 60 standing or seated, chairs only
- 36 seated at tables

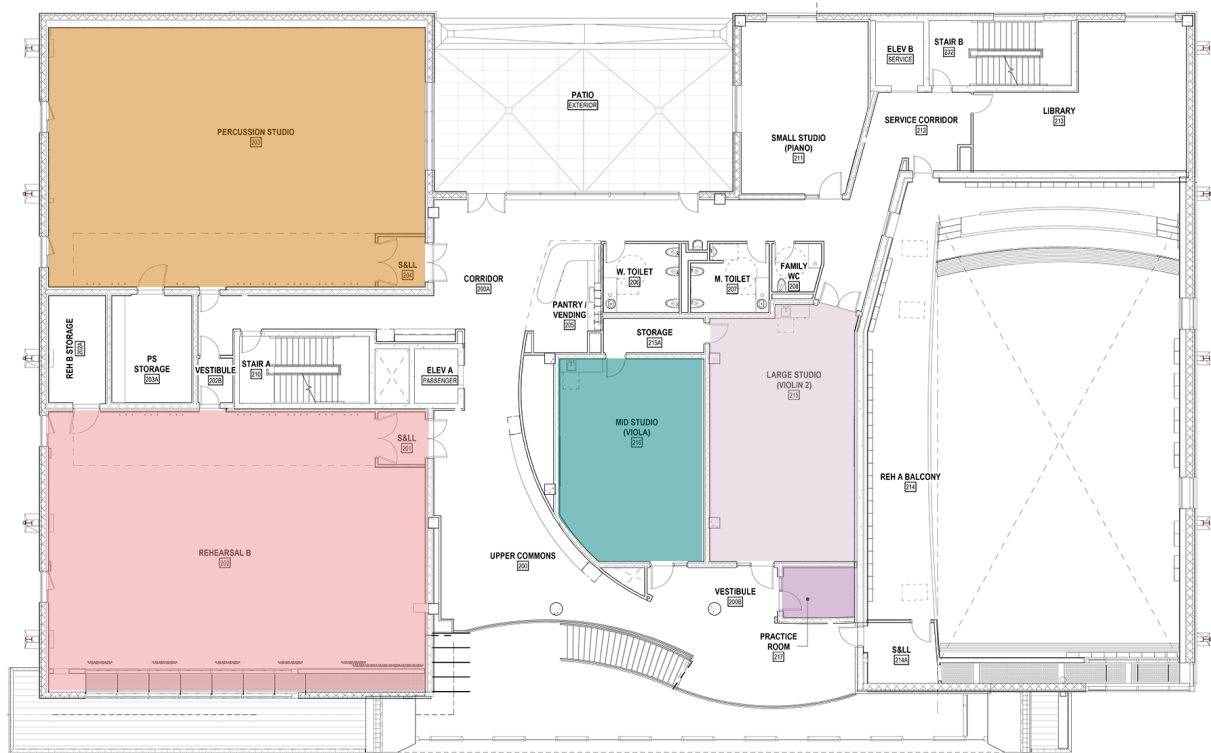
Conference Room

20' x 16' ~320 sq. ft.

CAPACITY:

- 12 people seated at the conference table
- 20 people including bench seating

2nd Floor



Rehearsal B

40'6" by 59', ~2380 sq. ft.

CAPACITY:

- Standing or seated, chairs only: 155
- Seated at tables: 95

BALCONY:

- Additional 20 chairs

Mid-Sized Studio (Viola)

32' by 22'9", ~730 sq. ft.

CAPACITY:

- Standing or seated, chairs only: 48
- Seated at tables: 30

Percussion Studio

40'6" by 59', ~2380 sq. ft.

CAPACITY

- Standing or seated, chairs only: 155
- Seated at tables: 95

BALCONY:

- Additional 20 chairs

Large Studio (Violin 2)

40'6" by 22'9", ~920 sq. ft.

CAPACITY:

- Standing or seated, chairs only: 60
- Seated at tables: 36

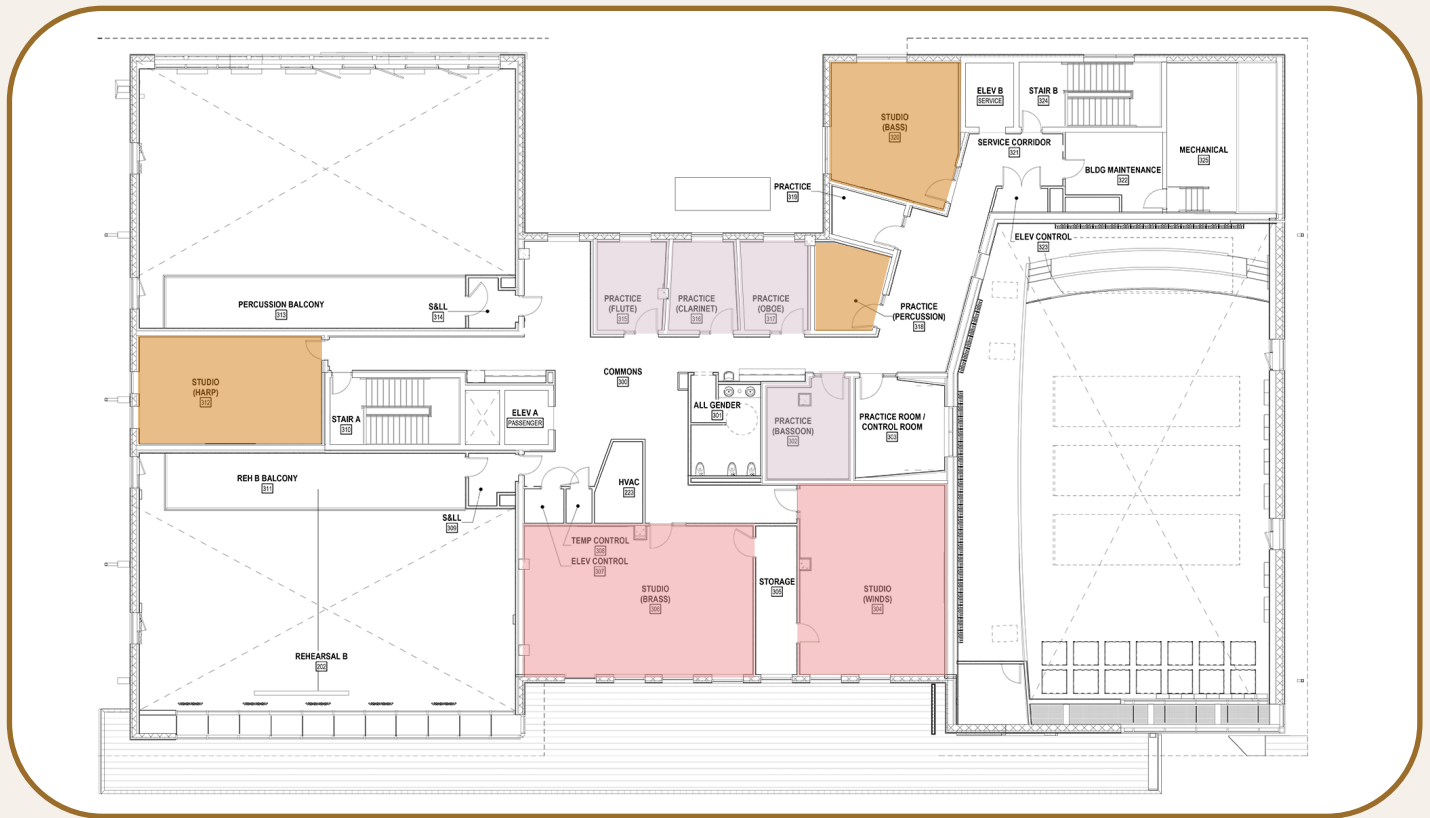
Private Practice Room (Room 217)

11' by 7'9", 85 sq. ft.

CAPACITY:

- 1-2

3rd Floor



Mid-Sized Studios (Brass, Winds)

36' by 23'6", ~850 sq. ft.

CAPACITY:

- Standing or seated, chairs only: 52
- Seated at tables: 32

Small Studios

21' by 20', ~420 sq. ft.

CAPACITY:

- Standing or chairs only: 25
- Seated at tables: 16

Practice Rooms

(Flute, Clarinet, Oboe, Bassoon)
~ 150 sq. ft.

- INCLUDED EQUIPMENT:
- Upright Piano

*** Private Practice Rooms are available for just \$19/hour when renter presents a student I.D. at the time of booking.**

Dining and Patio Space

First Floor Bar & Catering Space

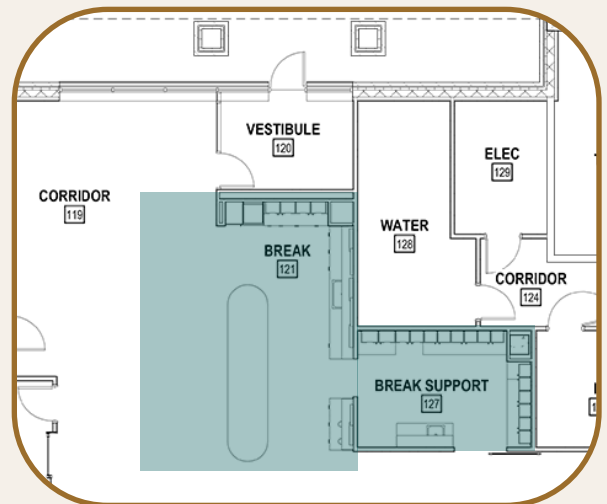
Ideal for coffee service, buffet-style meals, or happy hour setups, our First Floor Bar & Catering Space offers both style and utility. A spacious 13-foot countertop with barstool seating invites casual conversation, while behind-the-scenes amenities – including a full prep area, double sinks, fridge, freezer, and up to three microwaves – make food service easy. An electric stove is available upon request, giving caterers added flexibility.

COUNTERTOP:

- 13'x3'6"
- 6 stools

ACCESS TO:

- Prep space
- Fridge
- Freezer
- Microwave (x3)
- Sink (x2)
- Warming Stove (Upon request)



Second Floor Bar & Catering Space

Just off the second-floor breakout rooms and patio, this bar and catering area is an excellent hub for smaller receptions or mid-meeting refreshments. With built-in fridge drawers (x2), freezer, sink, and microwave, it supports self-serve stations or full-service staff. The sleek, compact layout keeps the focus on connection, not clutter.

PERFECT FOR:

- Light breakfast or snack service
- Small group receptions
- Event overflow from the patio

COUNTERTOP:

10'x3'
4 stools

Second Floor Patio

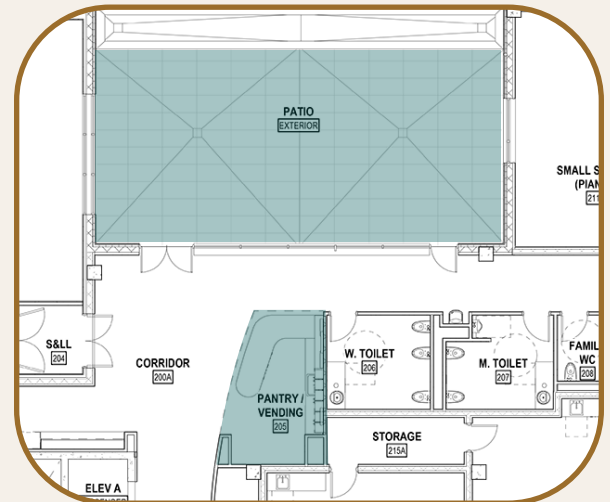
At nearly 900 square feet with seating for 36 and room for up to 60 guests, the Second Floor Patio brings a breath of fresh air to any gathering. Outfitted with stylish outdoor furniture and views of the surrounding neighborhood, it's a popular add-on for spring, summer, and early fall rentals. Ideal for informal networking, cocktail hours, or a midday stretch break.

PERFECT FOR:

- Outdoor receptions
- Pre-event mingling
- Small performances or remarks

CAPACITY:

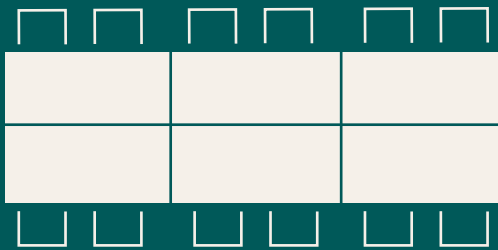
- 60 standing
- 36 seated at patio furniture



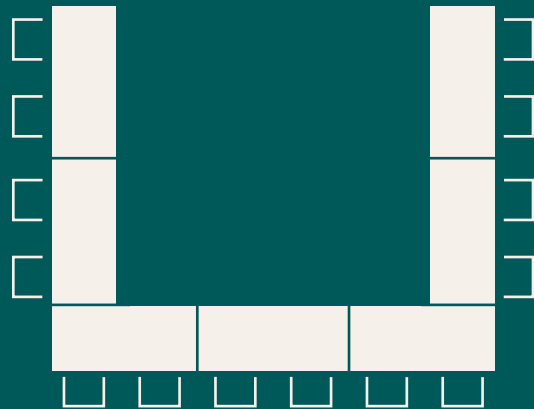
Room Configurations

Meeting Configurations

Conference



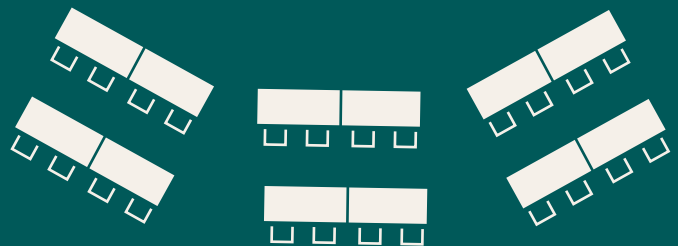
Whiteboard Meeting



Large Lecture
(includes staging)



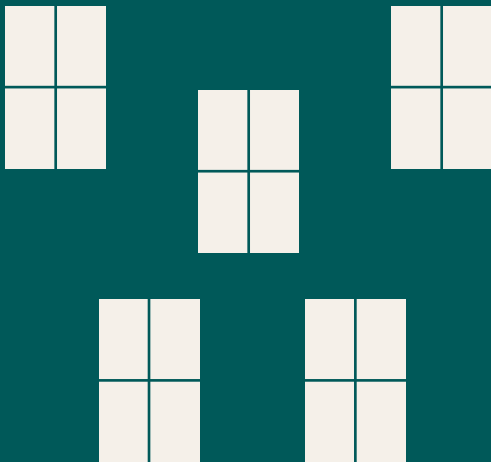
Presentation



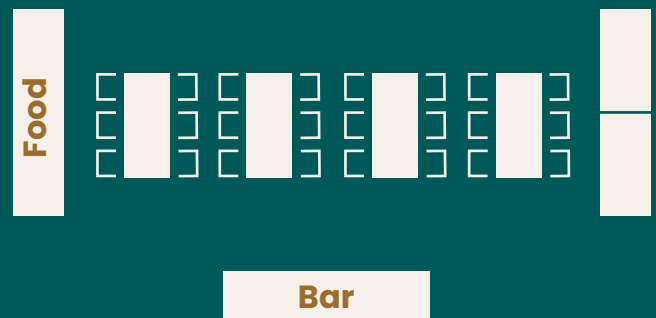
Room Configurations

Reception Configurations

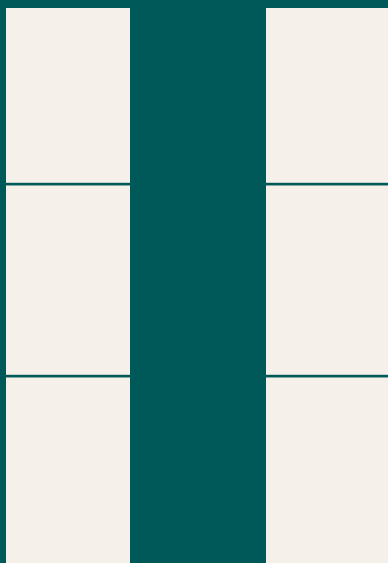
Small Pods



Reception (with food/drink)



Buffet Lines



Vendor Setup



Add-ons for all:

- Check-in table
- Bar
- Folding Tables
- Lectern
- Staging
- Classroom tables

Room Configurations

Performance Configurations

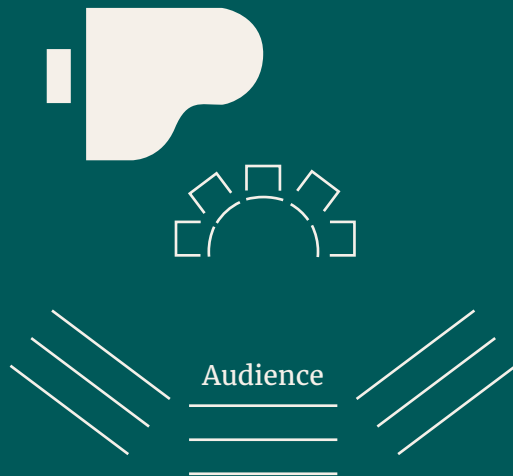
Small Group Performance – Rehearsal B

Window

Wide

Window

Narrow



Large Group Performance – Rehearsal A

Wide

Narrow



Orientation can be
flipped 180°

Features & Amenities

Amenities That Make Hosting Easy

Whether you're planning a day-long retreat or a quick offsite, the WYSO Center is designed with comfort, flexibility, and convenience in mind. Here's what's included when you rent with us:

Seamless Tech Access

Every meeting room is equipped with a high-definition TV or projector screen that connects easily to your device via Wi-Fi or our dedicated wireless keyboard and mouse. Presenting is plug-and-play – no complicated setup required.

Inspiring Shared Spaces

Guests are welcome to enjoy our second-floor gallery and outdoor patio, as well as the ground-level patio just outside our main lobby – ideal for coffee breaks, small receptions, or simply catching some fresh air between sessions.

Onsite Front Desk Concierge

A dedicated front desk staff member is present during your event to greet guests, answer questions, and assist with logistics – ensuring everything runs smoothly from start to finish.

Free Onsite Parking

Our private parking lot accommodates up to 30 vehicles, including two accessible spots – a rare convenience for downtown-adjacent events.

Fast, Reliable Wi-Fi

High-speed wireless internet is available throughout the building, with strong coverage in all meeting rooms, lounges, and shared spaces.

Secure Overnight Storage

Need to leave equipment or supplies overnight? As a secure, keycard-access building, we allow renters to safely store valuables in their reserved rooms for multi-day events.

Filtered Water on Every Floor

Stay refreshed with complimentary filtered water stations located on each level – no need to bring or order bottled water.



Elevator Access

Two elevators make the entire building fully accessible, with direct access to all rentable spaces and amenities.



Easy Load-In & Out

A rear loading dock is available to support larger setups, equipment drop-offs, or catering deliveries with minimal hassle.



Hassle-Free Cleanup

Basic trash and recycling services are included with your rental – we'll take care of it, so you don't have to.



Integrated Wireless AV

All rooms are equipped with wireless sound and video capabilities, making it easy to stream, present, or collaborate with confidence.



Rehearsal A- 42'9" by 67'9', ~2900 sq. ft.

CAPACITY:

- Standing or seated, chairs only: 180
- Seated at tables: 120

BALCONY:

- Additional 60 chairs

TECH:

- Projector-Epson EB-PU1006W
- Bluetooth connection to speakers
- Wireless projection connection
- Retractable projection screen
- Wall touchscreen control
- 2 streaming cameras

ACOUSTIC TREATMENTS:

- Acoustic Clouds
- Quadratic Reflective Wall Panels
- Absorptive Wall Panels
- Programmable Acoustic Banners
- Acoustically Isolated Floor

Percussion Studio - 40'6" by 59', ~2380 sq. ft.

CAPACITY:

- Standing or seated, chairs only: 155
- Seated at tables: 95

BALCONY:

- Additional 20 chairs

TECH:

- Projector-Epson EB-PU1006W
- Bluetooth connection to speakers
- Wireless projection connection
- Retractable projection screen
- Wall touchscreen control
- 2 streaming cameras

ACOUSTIC TREATMENTS:

- Acoustic Clouds
- Quadratic Reflective Wall Panels
- Absorptive Wall Panels
- Programmable Acoustic Banners
- Acoustically Isolated Floor

Rehearsal B - 40'6" by 59', ~2380 sq. ft.

CAPACITY:

- Standing or seated, chairs only: 155
- Seated at tables: 95

BALCONY:

- Additional 20 chairs

TECH:

- Projector-Epson EB-PU1006W
- Retractable projection screen
- Wireless projection connection
- Bluetooth connection to speakers
- Wall touchscreen control

ACOUSTIC TREATMENTS:

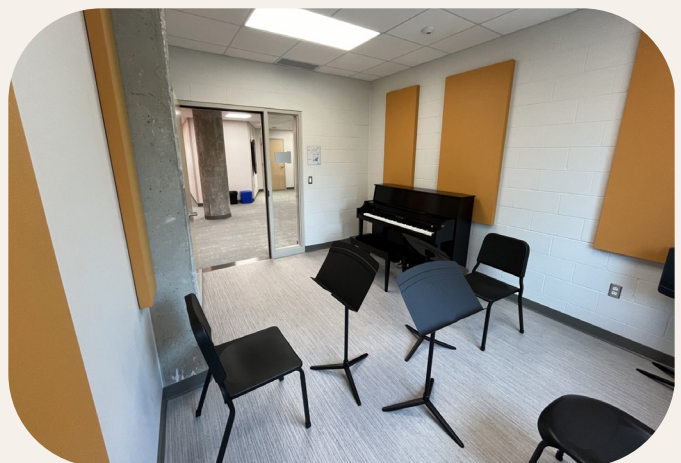
- Acoustic Clouds
- Quadratic Reflective Wall Panels
- Absorptive Wall Panels
- Acoustic Drapes
- Acoustically Isolated Floor

Practice Rooms ~ 85-150 sq. ft.

INCLUDED EQUIPMENT:

- Upright Piano

* Private Practice Rooms are available for just \$19/hour when renter presents a student I.D. at the time of booking.



Small Studio (Bass) – 21' by 20', ~420 sq. ft.

CAPACITY:

- Standing or chairs only: 25
- Seated at tables: 16

INCLUDED EQUIPMENT:

- Whiteboard

Mid-Sized Studios (Brass, Winds) – 36' by 23'6", ~850 sq. ft.

CAPACITY:

- Standing or seated, chairs only: 52
- Seated at tables: 32

INCLUDED EQUIPMENT:

- Upright Piano
- Whiteboard



Large Studio (Violin 2) – 40'6" by 22'9", ~920 sq. ft.

CAPACITY:

- Standing or seated, chairs only: 60
- Seated at tables: 36

TECH:

- Projector-Epson EB-PU1006W
- Retractable projection screen
- Wireless projection connection
- Bluetooth connection to speakers
- HDMI connection to computer
- Wall plate controls

ACOUSTIC TREATMENTS:

- Absorptive Wall Panels
- Acoustical Ceiling Tile

INCLUDED EQUIPMENT:

- Upright Piano
- Whiteboard

Mid-Sized Studio (Viola) – 32' by 22'9", ~730 sq. ft.

CAPACITY:

- Standing or seated, chairs only: 48
- Seated at tables: 30

TECH:

- Bluetooth connection to speakers
- Wall plate controls

ACOUSTIC TREATMENTS:

- Absorptive Wall Panels
- Acoustical Ceiling Tile

INCLUDED EQUIPMENT:

- Upright Piano
- Whiteboard

Catering (Made Easy)

Here's How It Works:

1. Tell us about your event

Let us know your estimated guest count, time of day, and any food or beverage preferences.

2. We match you with the right partner

Based on your needs, we'll recommend one of our catering partners who fits your style and budget.

3. We handle the coordination

We'll reach out to the vendor on your behalf and request a quote. You'll receive the estimated cost for approval before anything is booked.

4. You approve the plan

Once you've signed off, we finalize the order and schedule pick-up or delivery directly with the caterer.

5. You enjoy your event

Our staff ensures your food arrives on time and your setup is smooth – so you can focus on your guests.

Our Preferred Catering Partners:



Blue Plate Catering

A Madison favorite offering polished service and beautifully presented meals – perfect for large meetings, galas, or formal receptions.

Café Zupas

Delicious, crowd-pleasing salads, soups, sandwiches, and boxed lunches – ideal for midday events or working meetings.

Banzo

Flavorful Mediterranean and Middle Eastern cuisine with lots of vegetarian and gluten-free options. A great pick for casual gatherings or creative offsites.

Branch + Daughter

Elegant charcuterie boards, bar service, and small-batch offerings from Windsor's beloved butcher and market. Excellent for happy hours and mixers.

Planning something special? We're happy to help you customize your catering experience. Just let us know what you have in mind. Let's Start Planning!

Hotels & Accommodations

Stay steps away from your event.

The WYSO Center is proud to partner with some of Madison's top hotels — all conveniently located near our venue. Whether you're planning a multi-day retreat or welcoming out-of-town guests, our hotel partners offer comfort, quality, and exclusive group rates for WYSO Center clients.

Our Preferred Partners:

- **Hotel Indigo – Madison Downtown**

Stylish boutique accommodations just blocks from the WYSO Center.
Group booking available.



- **Holiday Inn Express & Suites – Madison Central**

Modern rooms, complimentary breakfast, and shuttle service
— ideal for business groups.



Need help coordinating your guests' stay?

We're happy to connect you with our hotel partners and assist with group arrangements.

All hotels are located within a 5-minute drive of the WYSO Center.



2025 Fee Schedule

| Room | Square Footage | Capacity | Hourly Rate | Hourly Non-Profit Rate | Notes |
|-----------------------|----------------|----------|-------------|------------------------|--|
| Rehearsal A | 3,000 | 180 | \$175 | \$132 | Requires 2 hourly event staff |
| Rehearsal B | 2,500 | 125 | \$150 | \$112 | Requires 2 hourly event staff |
| Percussion Studio | 2,500 | 125 | \$150 | \$112 | Requires 2 hourly event staff |
| Standard Studio | 900 | 30 | \$75 | \$57 | (Cello, Violin 1, Violin 2, Viola, Brass, Winds, Bass) |
| Private Practice Room | 150 | 2 | \$25 | \$19 | Does not require a custodial fee |
| Conference Room | 200 | 16 | \$50 | \$37 | |
| First Floor Kitchen | N/A | N/A | \$50 | \$37 | Fridge & freezer space available |
| Second Floor Kitchen | N/A | N/A | \$50 | \$37 | Fridge & freezer space available |
| Second Floor Patio | 1,000 | 70 | \$150 | \$112 | Subject to seasonal weather |

| Staffing | Hourly Rate | Notes |
|--------------|-------------------|--|
| Event Staff | \$25 | Required for all events (Some events require additional staff) |
| Custodial | \$35 | A one hour minimum is required for all rentals |
| Piano Tuning | \$200 | Must be booked 2 months in advance |
| Catering | Billed separately | Must be coordinate 2 months in advance |

| Equipment | Size | Quantity | One Time Fee | Notes |
|---------------------|-----------------|------------|---------------|---|
| Standard Chairs | | 275 | Free | Wenger Brand |
| Posture Chairs | | 125 | Free | Wenger Brand |
| Music Stands | | 225 | Free | Wenger Brand |
| Folding Tables | 30" x 72" | 25 | \$5 per table | Seats six |
| Flip Top Tables | 18" x 60" | 25 | \$5 per table | Seats two |
| Stage Decking | 48" x 96" decks | 8 | \$50 | Three tier options |
| Wireless Microphone | | 3 | \$20 | Rehearsal A, Rehearsal B, Percussion Studio |
| Projector & Screen | | 1 per room | \$25 | Mobile TV cart available |

| Instruments | Make | Quantity | One Time Fee | Notes |
|---------------------|----------|----------|--------------|---|
| Concert Grand Piano | Steinway | 1 | \$100 | Price covered if paying for tuning |
| Baby Grand Piano | Kawai | 3 | \$50 | Price covered if paying for tuning |
| Upright Piano | Variety | 5 | \$25 | Price covered if paying for tuning |
| Electric Piano | | 1 | \$100 | With amp |
| Drum Set | | 1 | \$75 | With rug |
| Percussion Kit | | | TBD | Please provide your specific equipment needs. |

Whether you're ready to reserve a space or just exploring possibilities, we're here to help. Reach out with your questions, ideas, or vision – and we'll make it happen.

Call or email us to schedule a tour of the WYSO Center!



☎ Phone: 608.733.6283 ext. 1142
✉ Email: events@wyso.center

WYSO Center for Music
1118 E. Washington Avenue
Madison, WI 53703

Conveniently located just minutes from the Capitol.



1118 E. Washington Ave.
Madison, WI 53703
wyso.center
events@wyso.center

